



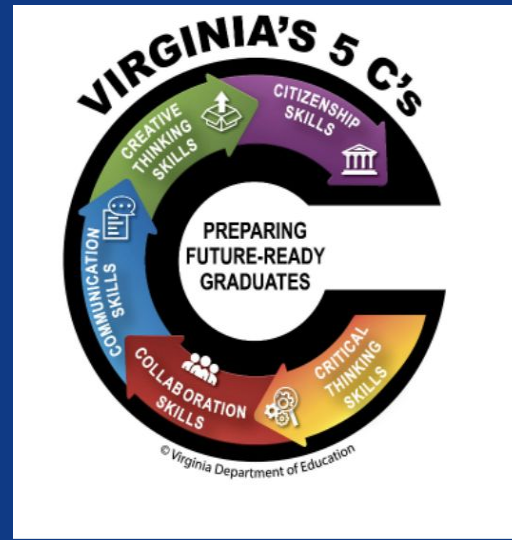
#SPSCREATESACHIEVERS

# SUFFOLK PUBLIC SCHOOLS

Mack Benn, Jr. Elementary  
School

## School Performance Plan

2023-2024





# **Student Achievement and Instruction**



#SPSCREATESACHIEVERS

# English

**Problem Statement:** There was a lack of consistency in the implementation of the reading curriculum and evidence-based practices.  
(Over a two year period, spring iReady reading data indicates that, on average, fewer than 50% of students in grades K-5 are reading on grade level.)

**SMART Goal:** By May, 2023-24, the percentage of students on or above grade level on PALS (K-2) and iReady Reading Diagnostic (3-5) will increase by 20% when compared to the 2022-23 school year.

**Essential Action/Research Based Strategy/Evidence-based Intervention (Change Idea):** Prioritizing using data to drive small group instruction and having that be a focus for phonological awareness, phonics (decoding/encoding), and vocabulary. Using explicit, systematic instruction to teach phonological awareness, phonics (encoding/decoding), and vocabulary.

**Alignment to the Strategic Plan:** Goal 1



#SPSCREATESACHIEVERS

# Math

**Problem Statement:** Students with disabilities, White, and Hispanic students are showing a decline in mathematics proficiency as measured by the Virginia Standards of Learning Assessments due to inconsistent high quality mathematics instruction and targeted intervention. (The Mathematics data shows that the achievement of the students in the sub groups of Students with Disabilities, White, and Hispanic has decreased by an average of 14% across the past 3 school years.)

**SMART Goal:** By the end of the 2023-2024 school year, there will be an increase in mathematics achievement on the SOLs, by an average of 7% across the sub groups of Students with Disabilities, White, and Hispanic.

**Essential Action/Research Based Strategy/Evidence-based Intervention (Change Idea):** Provide professional learning on progress monitoring and best practices for remediation and intervention. Include data analysis on subgroups during PLCs and collaboratively brainstorm next steps.

**Alignment to the Strategic Plan:** Goal 1



#SPSCREATESACHIEVERS

# Science

**Problem Statement:** Students are not showing proficiency in science as measured by the Virginia Standards of Learning Assessments due to lack of higher level science instruction and targeted support. (For the 2022-2023 school year, the total pass rate for 5th grade Science for All Grade Level was 53%.)

**SMART Goal:** The overall pass percentage on the Grade 5 Science SOL Test for the 2023-2024 school year will improve to at least 70%

**Essential Action/Research Based Strategy/Evidence-based Intervention (Change Idea):** Implement monthly Science collaborative planning/PLC sessions with fifth grade to design activities and lesson plans focusing on student application, hands-on experiences, rigor, and alignment. Create opportunities and activities to support Science content in grades K-5 focusing on student application, hands-on experiences, rigor, and alignment.

**Alignment to the Strategic Plan:** Goal 1



#SPSCREATESACHIEVERS



# School Climate and Culture



#SPSCREATESACHIEVERS



# Discipline/PBIS

**Problem Statement:** Some students are having a difficult time with peer/staff interactions and responding without physical aggression or threatening others. (The school overall had 260 incidents that resulted in ISS or OSS with 30 incidents overall being students with disabilities.)

**SMART Goal:** By June, 2024, the school's incidents of short term out of school suspensions for 2023-2024 will decrease by 10% when compared to the 2022-2023 school year. (baseline: 260 incidents from 2022-23) By June 2024, the school's incidents of out of school suspension of students with disabilities will decrease by 25% (baseline: 20 incidents from 2022-23).

**Essential Action/Research Based Strategy/Evidence-based Intervention (Change Idea):** Implementing all PBIS steps and tiers with fidelity.

**Alignment to the Strategic Plan:** Goal 2



#SPSCREATESACHIEVERS

# Climate and Safety

**Problem Statement:** Students - Some students are having a difficult time with peer/staff interactions and responding without physical aggression or threatening others. (According to the data, students feel respectful behavior by students towards their peers and teachers within the building is a concern (37% feel students respect each other on the Student Survey; 64% feel students respect teachers.) Staff - Staff are feeling overwhelmed by the workload and extreme student behaviors. (According to the data, morale, discipline policies, and protected instructional time are areas of concern to the staff. (38% - morale, 49% - discipline policies, protected instructional time - 56% on Staff Survey))

**SMART Goal:** Staff - Staff morale and culture will increase 30% by June 2024, as measured by the Instructional Staff Perception Survey, noted by Strategic Plan Goal 2, (Morale is high at my school). Student - Student respect for peers and building staff will increase by at least 10% by June 2023, as measured by the Student Perception Survey, noted by Strategic Plan Goal 3 (At this school, students treat teachers with respect/At this school, students treat teachers with respect)

**Essential Action/Research Based Strategy/Evidence-based Intervention (Change Idea):** Staff will build a more collaborative approach to staff morale. Students will engage in explicit character education.

**Alignment to the Strategic Plan:** Goal 2



#SPSCREATESACHIEVERS



# Attendance/Graduation

**Problem Statement:** Students are missing school too often and for various reasons (sickness, parents inconsistently sending/getting students to school, transportation issues), thereby affecting their academic performance. (The school overall has 128 students with 20 absences or more, which was 18.8% of the student population. Twenty-three percent (23%) of students were considered chronically absent (missing 10% or more of the population)

**SMART Goal:** By the end of the 2023-2024 school year, the percentage of chronically absent students at Mack Benn Jr. will be under 15%

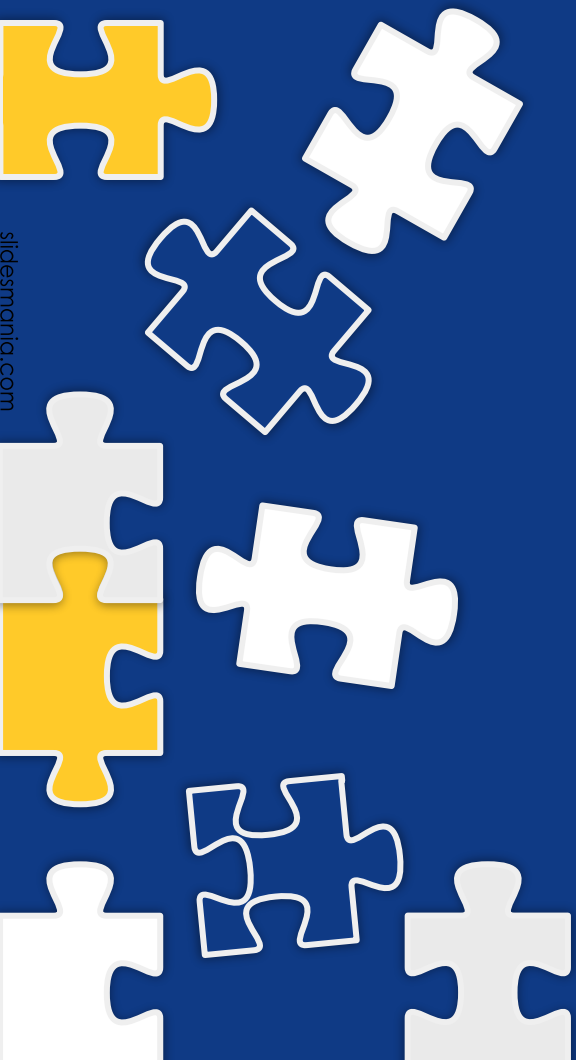
**Essential Action/Research Based Strategy/Evidence-based Intervention**

**(Change Idea):** Incorporate a tiered approach to encourage student attendance. Chronically absent students will be surveyed to identify reason(s) for poor attendance. Staff will utilize surveys in an effort to meet individual needs.

**Alignment to the Strategic Plan:** Goal 2



#SPSCREATESACHIEVERS



# Family Engagement

**Problem Statement:** We want to get as many of our parents and students to our family engagement events as possible and the majority are not attending. (We average about 20% attendance for our Family Engagement Events (which has increase from 10% two years ago), but we want to increase attendance, especially from our economically disadvantaged families.)

**SMART Goal:** Increase family engagement attendance to 25% of the student population for the 2023-2024 school year.

**Essential Action/Research Based Strategy/Evidence-based Intervention (Change Idea):** Provide family engagement activities that focus on student participation/performance and parental support.

**Alignment to the Strategic Plan:** Goal 4



#SPSCREATESACHIEVERS